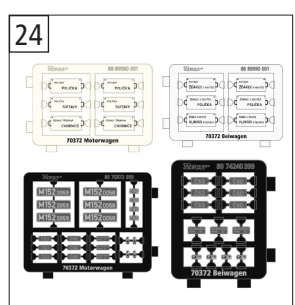
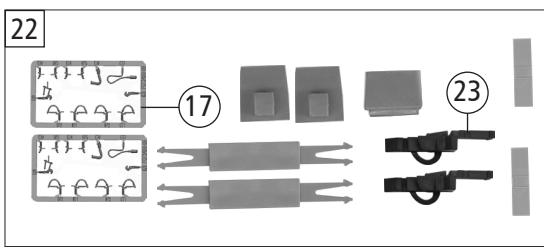
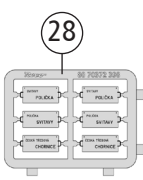
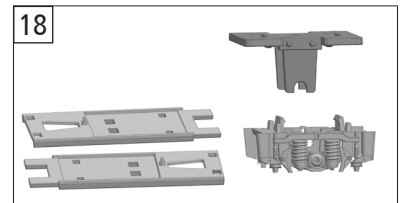
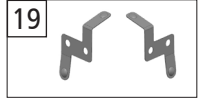
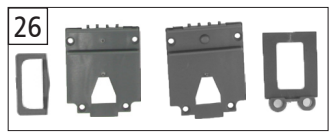
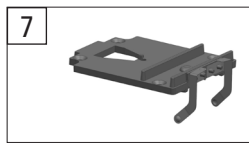
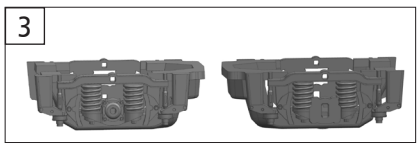
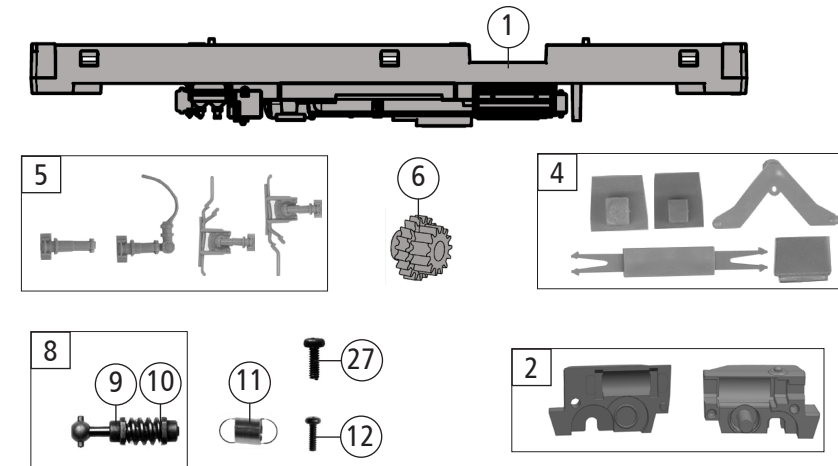


Pos. Nr. Pos.no.	Beschreibung Description	Art.-Nr. Art.no.	Preisgruppe Price bracket
6	CSD M 152		
70372			
70373			
1	Inneneinrichtung MW Interior fittings	145138	17
2	E-Lokführer Loco-driver	110407	6
3	TS - Sitze TW + BW Part set - Seats	145139	9
4	Rahmendeckel MW+BW Frame cover	145140	8
5	TS - Leitung, Kessel Part set - Lines,tank	145141	7
6	Gehäuse MW kpl. Betr. nr. M152.0047 Body complete Loco no. M152.0047	145659	34
7	Tritt Li+Re Treadle L+R	145143	6
8	Gehäuse BW kpl. Betr. nr. 24-29075 Body complete Loco no. 24-29075	145660	34
9	Platine analog MW PLUX-16 PCB analog	145149	18
10	Platine Innenbel. TW/BW PCB interior lights	145150	18
11	Brückenstecker TVS PLUX-16 Jumper	133241	10
12	Motor KM Schwungm.+2 Kardansch. Motor with flywheel+2 cardan reception	145151	17
13	Kardanschale Cardan reception	87104	4
14	Gehäuse MW kpl. Betr. nr. M152.0059 Body complete Loco no. M152.0059	145153	34
15	TS - Fenster MW/BW Part set - Windows	145154	14
16	Lichtnagel Light pin	145155	3
17	Scheibenwischer Li.+Re. Wipers L+R	145156	6
18	TS - Griffe Part set - Handles	145157	9
19	Inneneinrichtung BW Interior fittings	145160	8
20	Platine analog BW PLUX-16 PCB analog	145164	18
21	Brückenstecker PLUX-16 Jumper	129630	10
22	Gehäuse BW kpl. Betr. nr. 24-29093 Body complete Loco no. 24-29093	145166	34
23	TS - Lichtnagel Part set - Light pin	145173	6
24	Kardanschale Motor Motor cardan reception	145383	4
25	Kardanwelle L=20 mm Cardan shaft	100260	4
26	SK - Schraube M 1,6x4 mm SK - Screw	115161	3
27	M-Kontaktfeder D=2,3 L=9,9 mm Contact spring	116812	3
<b>Sound</b>			
28	Platine Onboarddecoder MW PCB	145170	43
29	Lautsprecher Loudspeaker	129524	14
30	Platine digit. BW PLUX-16 PCB digital	145171	13
31	Decoder BW PLUX-16 Decoder	145172	41

Änderungen in Konstruktion und Ausführung vorbehalten  
We reserve the right to change the construction and specification



Pos. Nr. Pos.no.	Beschreibung Description	Art.-Nr. Art.no.	Preisgruppe Price bracket
1	Grundrahmen MW Base frame	145136	17
2	Getriebesatz 2tlg. Gear set 2 parts	145137	10
3	DG-Blende 1+2 MW Bogie frame	145142	10
4	TS - Deichsel Part set - Drawbar	145144	6
5	TS - Zylinder Part set - Cilinder	145145	8
6	Schneckenzahnrad Z=19re./14ge. Wormgear	86416	4
7	Radkontakt Li.+Re. Wheel contact L+R	145147	11
8	Schneckensatz Worm gear set	145148	13
9	Lager f. Schneckenachse Worm gear axle housing	89749	6
10	Beilagscheibe 2,1x4 / 0,2 mm Washer	86108	3
11	Zugfeder D=2,5 L=2,7/5,8 mm Draw spring	86208	3
12	SK - Schraube M 1,6x7 mm SK - Screw	116493	3
13	Standardkupplung Standard coupling	89246	6
14	Radsatz m.Zahnr. o.Haftr. Wheelset w.gearwh. w/o traction tyre	145152	11
15	Grundrahmen BW Base frame	145158	10
16	Puffer MW Buffer	145159	4
17	TS-Bremsschläuche und Zughaken Part set brake tubes & coupling hooks	139832	7
18	TS - DG-Blende BW Part set - Bogie frame	145162	10
19	Radkontakt Li.+Re. BW Wheel contact L+R	145163	10
20	Radsatz o.Zahnr. o.Haftr. BW Wheelset w/o gearwh. w/o traction tyre	145165	10
21	Puffer BW Buffer	145167	3
22	Zurüstbeutel Bag of accesories	145168	12
23	Kurzkupplung Short coupling	115550	6
24	Tafelsätze Set of panels	145169	24
25	Radsatz m.Zahnr. m.1Haftr. Wheelset w.gearwh. w. 1 traction tyre	145366	12
26	TS - Abdeckungen Part set - Covers	145146	7
27	GF - Schraube M 1,6x4 mm GF - Screw	114850	3
28	Tafelsatz Set of panels	145763	12

Ersatzteile erhalten Sie direkt unter [www.roco.cc](http://www.roco.cc), bei Ihrem Fachhändler oder Ihrer Landesvertretung.  
Spare parts can be ordered directly at [www.roco.cc](http://www.roco.cc) and from your local dealer or country representative.